

## Metaform DUO Prefabricated Joint Systems

**M**etaform rails are used back to back to form a lightweight free movement joint which provides armoured protection to the arris of the concrete slab. This design and patent protected system anchors at the top and the bottom to ensure that it is totally tied into the concrete along the entire length of rail. Unlike some designs of joint detail that replace the concrete at the joint face with metal strips, the Metaform design permits the full depth of concrete to be used, providing greater resistance to compressive loads at the joint.

- **Innovative design.**
- **Strong lightweight construction.**
- **Precision engineering manufacture.**
- **Heavy galvanised coating.**
- **Constructs floors to “Superflat” category.**
- **Provides steel armouring to joint arris.**
- **Accepts standard dowels and re-bar @ 300mm ctrs.**
- **Assists in resisting dowel burst out.**
- **Adjustable height and alignment.**
- **Range of easy and unique fixing methods.**

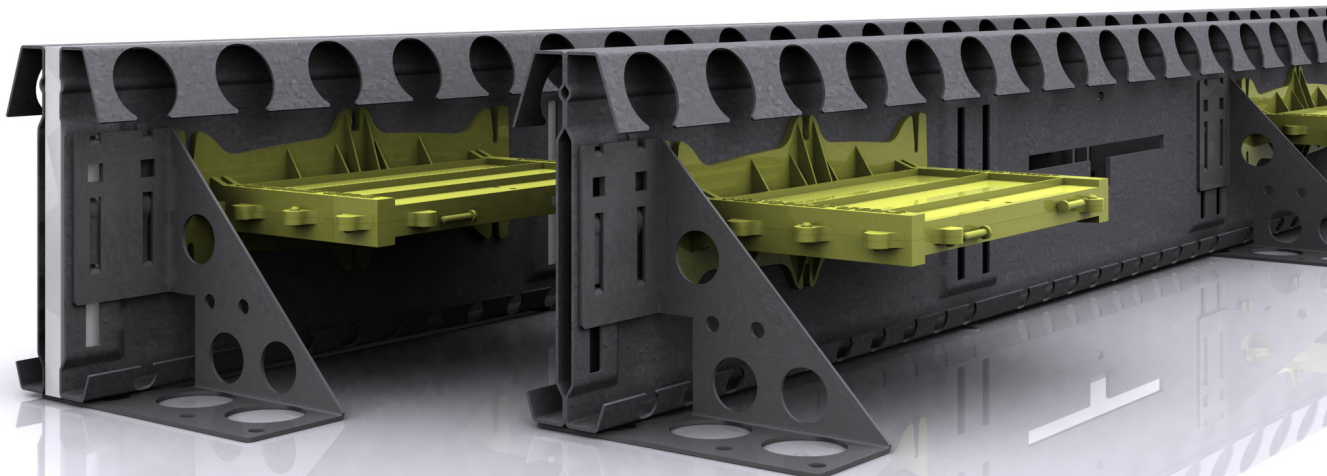
Lengths of foam can be fixed between the back to back faces of Metaform to create a preformed external expansion joint. This system has significant advantages over timber as it does not need to be stripped after the pour, it armours the arris of the joint and will accept the Metadowel thereby providing a higher level of load transfer than traditional dowels.

Both systems can be installed using the metal feet, but the use of the Speedfix will ensure much quicker installation times and easier height adjustment.

- **Quick, simple installation.**
- **Suitable for all types of concrete slabs.**
- **135mm, 160mm, 185mm sizes available immediately from stock, these will suit up to 225mm deep slabs, other sizes by special order.**

<b>Rail</b>	<b>Screed or Slab Depths</b>	<b>Weight per meter (kg)</b>
135*	135mm - 175mm	4.60kg
160*	160mm - 200mm	5.13kg
185*	185mm - 225mm	5.60kg

\* Available assembled or in kit form for self-assembly.



**Metalscreed Ltd.**

**Tel: +44 (0)1752 500083 • Fax: +44 (0)1752 561811 • Email: [info@metalscreed.com](mailto:info@metalscreed.com)**

**Web: [www.metalscreed.com](http://www.metalscreed.com)**